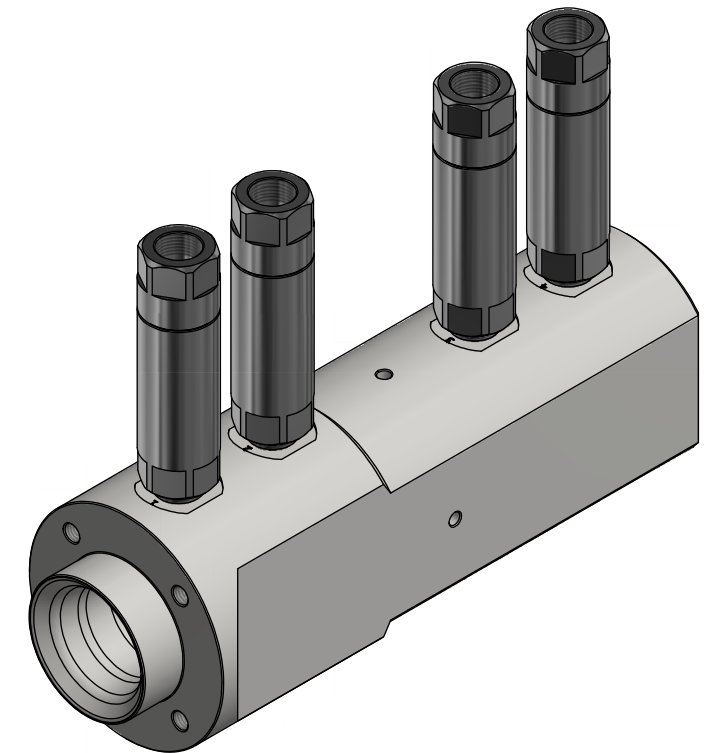
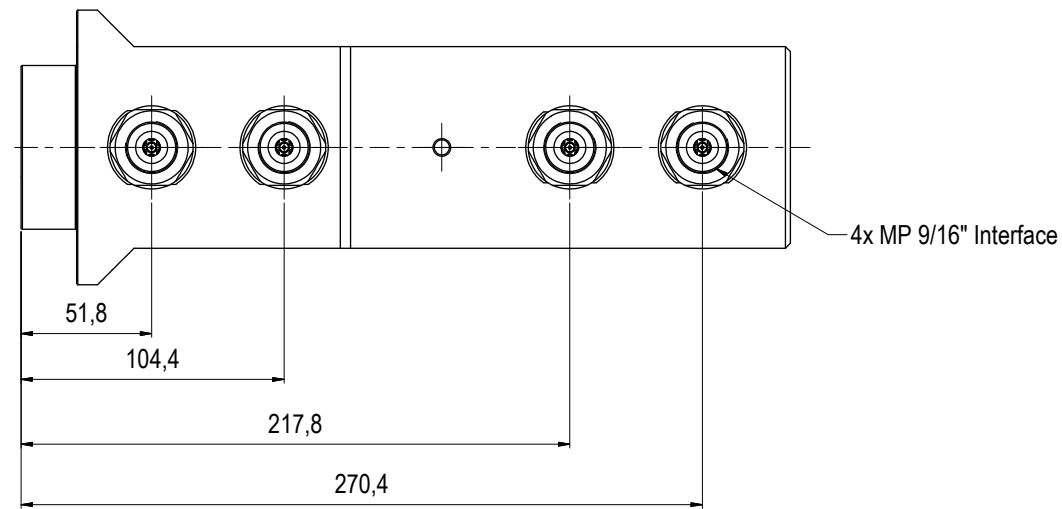
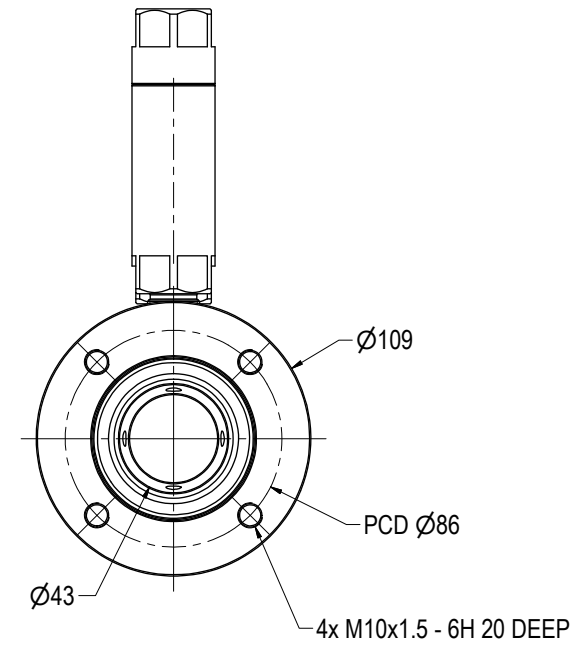
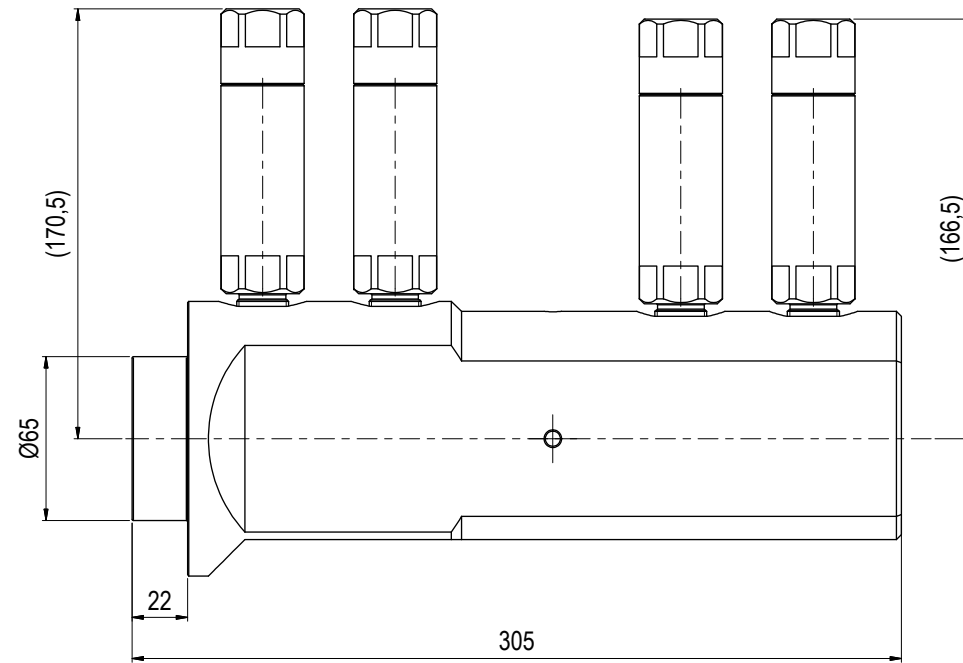
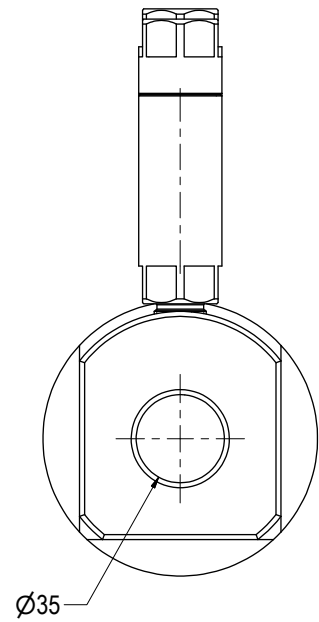


NOTE: 1
 STANDARDS:
 API 17H Type 2
 API 6A

NOTE: 2
 INTERFACE INFORMATION:
 Hydraulic: MP 9/16"
 Mechanical: 4xM10@PCD 86
 Electrical: N/A
 Data Com.: N/A

NOTE: 3
 PROPERTIES:
 Material Class: N/A
 Temperature Class: N/A
 Rated Work Press Bar: 690
 Test Pressure: N/A
 Specification Level: N/A
 Flow Rate: N/A
 Qualification: N/A
 Application: N/A
 Load Rating: N/A
 Torque Rating: N/A
 Design Water Depth: N/A
 Weight in Air: 15,4 kg
 Volume: 1,96 dm³
 Submerged Weight: 13,35 kg



Rev.	Date	Reason for issue	Revision change	Made	Chk'd	Appr.
01	21.2.2024	9-IFU (Issued for Use)		HNJ	TAN	HNJ

BLUE LOGIC

This Drawing is the Property of Blue Logic AS © and must Not be Loaned, Reproduced or Transferred to others without written Permission

Dwg Scale:	NTS
Dwg Proj:	
Dwg Format:	A3

Drawing title:	Ø35/Ø43 QP Rec 10k Interv wCV MP 9/16"	
Drawing number:	BC0841	Rev: 01